

Empowering Telecom Infrastructure Management

Introducing CONTRMOTE, a groundbreaking solution designed to revolutionize the management, monitoring, and control of Telecom Passive Infrastructure. Tailored for the unique challenges of remote telecom tower sites, CONTRMOTE ensures 99.99% uptime while significantly reducing capital and operating costs.



Enhancing Efficiency with Real-Time Monitoring

CONTRMOTE enables real-time monitoring of on-site technical equipment, energy consumption, and environmental parameters. This includes theft, damage, and unauthorized access detection, providing instant notifications for proactive maintenance.

Next-Generation Remote Management

Designed for critical assets across wide geographical areas, CONTRMOTE offers unmatched flexibility through its modular system. This adaptability allows for seamless customization to meet specific site requirements, ensuring a

Integrated Efficiency for Telecom Tower Sites

Taking a holistic approach, CONTRMOTE seamlessly integrates environmental monitoring, access control, video security, power monitoring, and fuel monitoring. This integrated approach optimizes efficiency, streamlining operations and enhancing overall performance.

Seamless Integration for Comprehensive Connectivity

Seamlessly integrating over 600 hardware devices through a unified platform. This advanced level of connectivity transforms telecom tower management into an intelligent, data-driven operation. Our comprehensive solution brings together diverse sensors, control units, and gateways, fostering a unified ecosystem that empowers telecom providers with unprecedented insights and control ensuring a cohesive and streamlined approach to passive infrastructure management.

AC
Contact Sensor sim-9b7d-cd69-0a6e
Jan 11, 2024, 6:00:00 PM

Digital Input 1:
Not In Use

Digital Input 2:
In Use

Digital Input 3:
In Use

Digital Input 4:
Not In Use

Low

Diesel Generator
Power Meter sim-9b7d-cd69-ea0f
Jan 11, 2024, 6:00:00 PM

Genset Operating State:
1.0

Most Recent Fault:
In Use

Power Output:
86.0 kW

Battery Voltage:
3.30 V

Oil Pressure:
17.0 kPa

Engine Temperature:
28.8 °C

Engine Speed:
86.0 rpm

Number Of Engine Start:
2.0

Engine Run Time:
351736.0 min(s)

Diesel Levels:
In Use

Diesel Level
Submersible Water L
Jan 11, 2024, 6:00:00 PM

Distance:
0.2 m

Volume:
23.0%

100.0%

Door
Open/Close sim-9b7d-cd69-0a6e
Jan 11, 2024, 6:00:00 PM

Door:
Open

Power Meter 1
Electric Meter sim-9b7d-cd69-e34e
Jan 11, 2024, 6:00:00 PM

Multiplier:	Current:	Min Current:	Max Current:
5	131.17 A	125.46 A	162.51 A
Power:	Energy (Total):	Energy (Last Hour):	Energy (Last 24 Hour):
62.963 kW	17055.830 kWh	15.162 kWh	128.783 kWh
kWh Ampere Hour (Total):	kWh Ampere Hour (Last Hour):	Total Time Machine Running Time (Last 24 hours):	
7.107 kWh	0.032 kWh	07:10:06 Hour(s)	
kWh Ampere Hour (Last 24 Hour):	Total Time Machine Down (Last 24 hours):		
0.268 kWh	00:00:00 Hour(s)		
Cost:	Capacitor Voltage:	Internal Temperature:	
-	5.00 V	28.0 °C	

Power Meter 2
Electric Meter sim-9b7d-cd69-f189
Jan 11, 2024, 6:00:00 PM

Multiplier:	Current:	Min Current:	Max Current:
5	131.17 A	125.46 A	162.51 A
Power:	Energy (Total):	Energy (Last Hour):	Energy (Last 24 Hour):
62.963 kW	17055.830 kWh	15.162 kWh	128.783 kWh
kWh Ampere Hour (Total):	kWh Ampere Hour (Last Hour):	Total Time Machine Running Time (Last 24 hours):	
7.107 kWh	0.032 kWh	07:10:06 Hour(s)	
kWh Ampere Hour (Last 24 Hour):	Total Time Machine Down (Last 24 hours):		
0.268 kWh	00:00:00 Hour(s)		
Cost:	Capacitor Voltage:	Internal Temperature:	
-	5.00 V	28.0 °C	

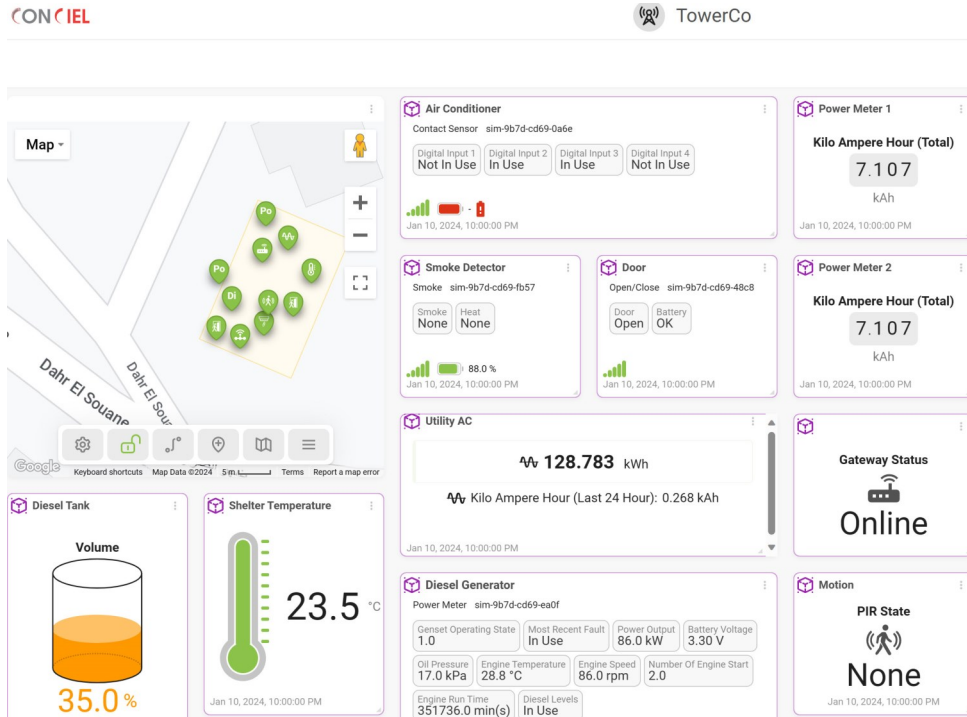
CONCIEL

Device Registry 60 Devices

HARDWARE ID	DEVICE TEMPLATE
<input type="checkbox"/> sim-9b6c-cd29-6df1	Dragino LDD520 Liquid Level
<input type="checkbox"/> sim-9b6c-cd29-3cf3	Adeunis Air Pressure Delta P
<input type="checkbox"/> sim-9b7d-cd69-43a3	Moko LW007-PIR LoRaWAN PIR Motion Sensor
<input type="checkbox"/> sim-9b6c-cd29-5885	Netvox R718N115
<input type="checkbox"/> sim-8dd5-c1a5-a478	Vutility HotDrop 3.0 (Official)

Central Dashboard for Unprecedented Control

Experience unparalleled control with CONCIEL Solution's centralized management dashboard. Providing real-time insights, triggers, and alarms for quick decision-making, this dashboard centralizes all data for efficient management of devices, access control, and video surveillance.



Advanced Environmental Monitoring

CONTR@MOTE employs a range of sensors to monitor temperature, humidity, water intrusion, smoke, and hazardous gases. Near real-time alarms ensure quick response to environmental changes and facilitate optimal settings.

Fuel Monitoring for Operational Optimization

Utilizing ultrasonic fuel level sensors and flow-meters, CONTR@MOTE ensures accurate fuel level management. This advanced system plays a critical role in generator operation, preventing issues such as theft, tampering, and unauthorized access.

Power Monitoring for Reliable Operations

With a variety of power monitoring devices, CONTR@MOTE connects directly to batteries, generators, and rectifiers. Alerts are triggered in case of predefined thresholds being breached, ensuring stable power sources for maximum tower uptime.

Access Control for Remote Security

Addressing challenges posed by remote and isolated sites, CONTR@MOTE provides a unique access control solution synchronized with recorded video. Door Control Units (DCU) and Cabinet Control Units (CCU) offer scalable control for sites covering vast geographical areas.

Surveillance for Comprehensive Security

CONTR@MOTE supports a range of IP cameras for surveillance. Picture logs and live video streaming to the central NOC enhance security, with motion detectors and door contact sensors providing additional layers of protection.